



# GAT MONTHLY MEMBERSHIP PROGRESS REPORT

Results as of: 4/30/2023

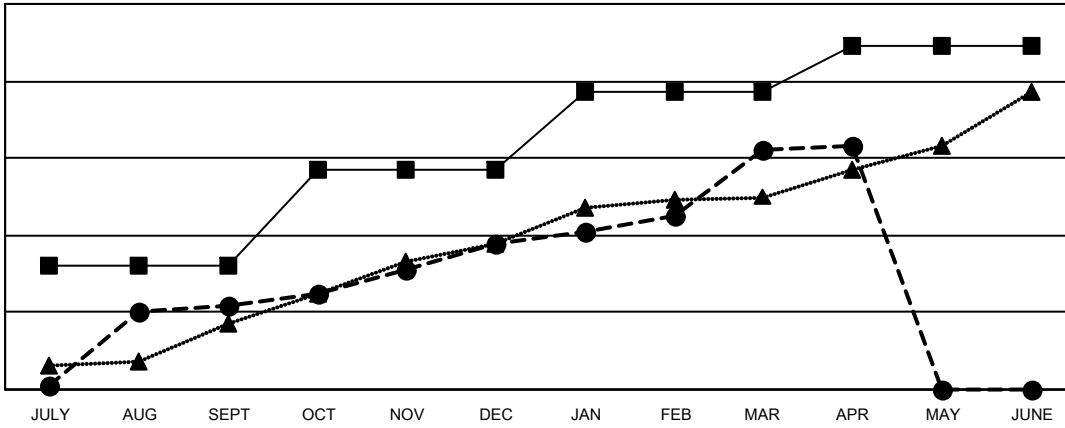
Multiple District 318

LOCATION: INDIA

| Clubs                 |               |           |               |
|-----------------------|---------------|-----------|---------------|
| RESULTS FOR 2022-2023 |               |           |               |
| QUARTER               | NEW CLUB GOAL | NEW CLUBS | DROPPED CLUBS |
| JULY/AUG/SEPT         | 32            | 22        | 3             |
| OCT/NOV/DEC           | 25            | 16        | 22            |
| JAN/FEB/MAR           | 20            | 24        | 6             |
| APR/MAY/JUNE          | 12            | 1         | 1             |

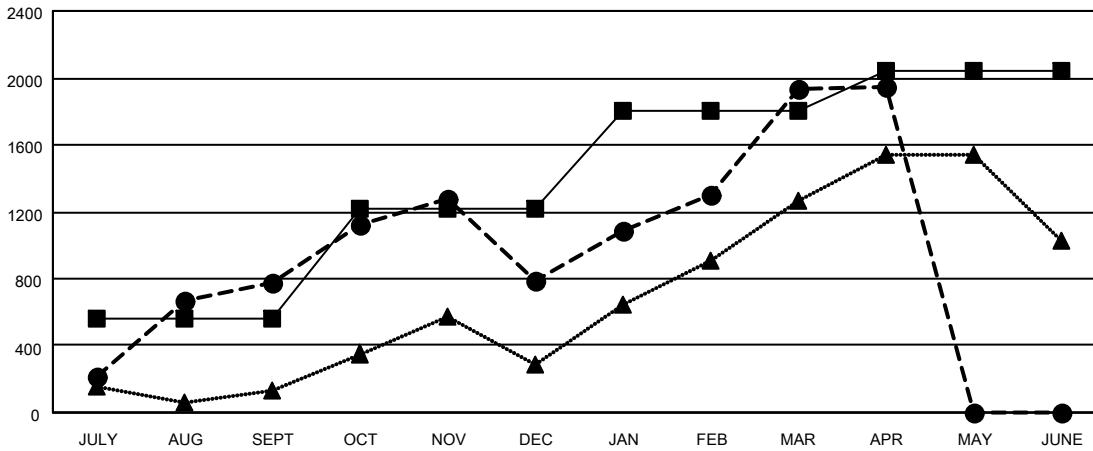
| Members               |                        |                      |  |
|-----------------------|------------------------|----------------------|--|
| RESULTS FOR 2022-2023 |                        |                      |  |
| QUARTER               | MEMBER GROWTH NET GOAL | MEMBER GROWTH ACTUAL | DROPPED MEMBERS ACTUAL (including transfers) |
| JULY/AUG/SEPT         | 560                    | 1,361                | 538  |
| OCT/NOV/DEC           | 655                    | 1,360                | 1,259  |
| JAN/FEB/MAR           | 590                    | 1,572                | 355  |
| APR/MAY/JUNE          | 240                    | 147                  | 128  |

GOALS AND ACTUAL NEW CLUBS CUMULATIVE



- - CURRENT YEAR GOALS FOR NEW CLUBS
- - CURRENT YEAR ACTUAL NEW CLUBS
- ▲ - LAST YEAR ACTUAL NEW CLUBS

GOALS AND ACTUAL MEMBERS CUMULATIVE



- - MEMBER GROWTH NET GOAL
- - MEMBER GROWTH ACTUAL
- ▲ - LAST YEAR MEMBERSHIP ACTUAL

|                        |   |  |
|------------------------|---|--|
| DROPPED CLUBS: 32      | 538 CLUBS OF 823 ADDED 1 OR MORE NEW MEMBERS              | <b>GENDER DISTRIBUTION</b>                   |
| <b>DROPPED MEMBERS</b> | <a href="#">CLICK HERE FOR CUMULATIVE MEMBERSHIP DATA</a> | MALE 21,650 (80.20%)                         |
| DECEASED 101           |   | FEMALE 5,344 (19.80%)                        |
| CLUB CANCELLED 588     |   | NON BINARY 1 (0.00%)                         |
| OTHER 1,591            |   | PREFER NOT TO ANSWER 1 (0.00%)               |
| <b>TOTAL 2,280</b>     |   | <b>TOTAL FAMILY UNIT MEMBERS 9,482</b>       |
|                        |   | <b>FAMILY MEMBERS PAYING HALF DUES 5,063</b> |